

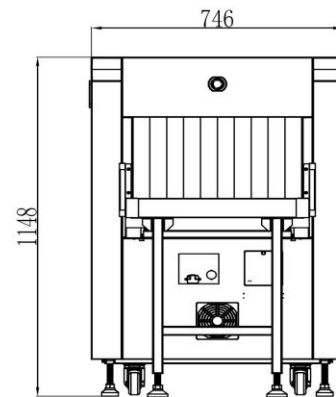
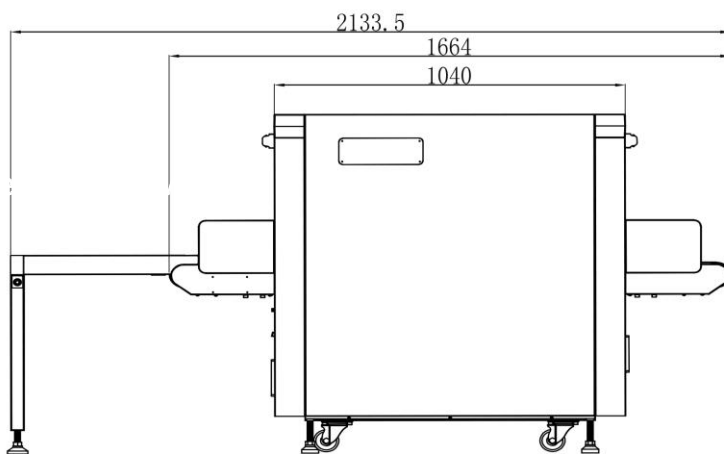
# SG-L 5030B X-Ray Baggage Scanner

## Product Highlights

- \* Multilingual operation
- \* Automatic built in test and self diagnosis
- \* Secure access Key
- \* Continuous working 10000 hours above
- \* Threat alert and material classification
- \* International standard configuration:
- \* Network-Ready
- \* Energy saving design
- \* One key turn off
- \* Drugs and explosives inspection
- \* Indication of the date and time



## Dimensional Drawing



## Important Sizes :

Product Size: 2133.5\* 746 \* 1148mm (L × W × H)

Tunnel Size: 500\* 305mm (width × height)

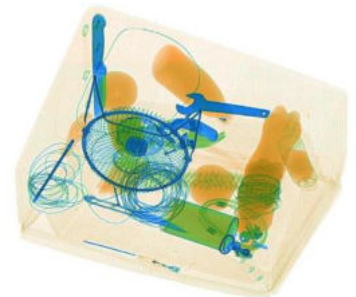
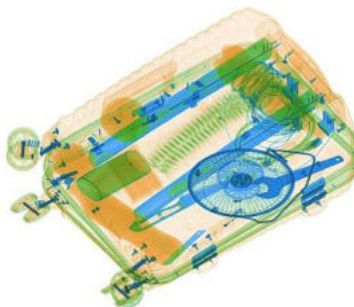
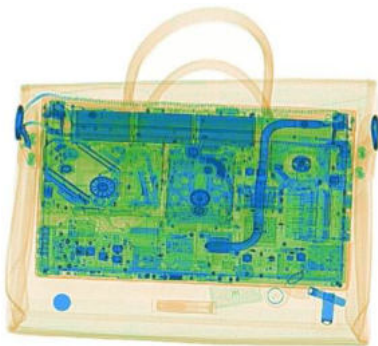
## General Specifications

■ Wire Resolution	Typical AWG40
■ Penetration resolution	Typical AWG34
■ Spatial resolution	Vertical:1.0mm, horizontal:1.0mm
■ Penetration	38mm
■ Resolution of organic matter	1 - 120 mm
■ Grayscale and mixture resolution	1 - 60mm
■ Resolution of inorganic objects	0.2-14mm
■ Effective material resolution	Meet the requirements of GB15208.1-2005
■ X-Ray dosage each inspection	≤4.5 μSv(uGy)
■ Boundary Leakage	≤0.5 μSv /h(uGy/h)
■ S/N ratio	<60dB
■ Conveyor speed	0.2m/s
■ Conveyor max load	100KG
■ Power consumption	0.5KW
■ Safety performance requirements	Meet the requirements of GB15208.1-2005
■ EMC requirements	Meet the requirements of GB15208.1-2005
■ Electrical safety	Meet the requirements of GB15208.1-2005
■ Environmental applicability	Meet the requirements of GB15208.1-2005
■ Leakage current	≤5.0mA
■ Film Safety	Guarantee ASA/ISO1600 Film
■ Weight	320kg
■ Operation temperature/Humidity	5C°- 40C°/0%-90%
■ Storage temperature/Humidity	-20C°-60C° /10%-90%
■ Atmospheric pressure	86kPa-106kPa
■ Operation Power	AC220V(±10%-15%) 50±3Hz
■ Operation system	Windows XP

## Configuration

■ X ray generator	160KV, oil cooling, from top to bottom
■ Electric roller	Direct current
■ Computer	CPU: Intel Celeron 2.60-2.70GHz, Hard drive: 500G, Storage : 2G
■ Monitor	21.5" LED screen, resolution: 1280*1024 pixels
■ Operation console	Single screen console

## Scanned images



## Software Functions

<ul style="list-style-type: none"> <li>■ Power-on self-test</li> <li>■ Image processing</li> <li>■ Image Recall</li> <li>■ The number of images stored</li> <li>■ Image management</li> <li>■ Operator management</li> <li>■ Dangerous goods image insertion</li> <li>■ Equipment diagnosis</li> <li>■ System Settings</li> <li>■ System equipment information</li> <li>■ Training function</li> </ul>	<p>With the function of fault self-check, automatically judge the fault and prompt the fault code information in time.</p> <p>With the function of Color/BW, negative, high/low penetration, organic /inorganic stripping, general enhancement, and pseudo color, etc.</p> <p>30 preceding images recallable.</p> <p>Up to 10,000 images stored automatically.</p> <p>With the functions of image information query, open, export and print, 6 image formats can be exported (JPG, BMP, XF, PNG, TIFF, GIF )</p> <p>Operators can be added and deleted, and operator names, groups, passwords, enabled status can be modified, and usage logs can be exported.</p> <p>TIP insertion pictures can be added and deleted, TIP enable status, injection interval, floating range, motion determination time, and stationary determination time can be set; the user can check the operator by recording information.</p> <p>Key components of equipment can be diagnosed through the diagnostic interface, including detector, motor positive and negative rotation, infrared sensor, special keyboard, etc.</p> <p>Programmable key, imaging display (horizontal, vertical image, maximum magnification, display recovery), scanning mode setting (two-way, direction, strong scanning, energy saving), auxiliary inspection (difficult to penetrate, explosives, drugs), luggage counter function Settings.</p> <p>Display software version, equipment model, factory number, scan count, power on time, beam out time, image file storage capacity and other information. Able to conduct automatic through-baggage training for new operators.</p> <p>Able to conduct automatic through-baggage training for new operators.</p>
--	---

## Compliance

<ul style="list-style-type: none"> <li>■ International</li> <li>■ National</li> </ul>	<ul style="list-style-type: none"> <li>* ISO19001 ; ISO14001 ; ISO27001 ; OHSMS18001 ;</li> <li>* CE , ROHS, FCC, REACH</li> <li>* USA, FDA</li> <li>* Health Inspection Report</li> <li>* Computer Software Copyright Registration Certificate</li> <li>* Software Product Registration Certificate</li> <li>* Radiation Safety Certificate from Ministry of Public Security</li> <li>* Quality Certification from Safety and Police Electronic Products Quality Inspection Center</li> <li>* Design patent certificatio</li> </ul>
---	--