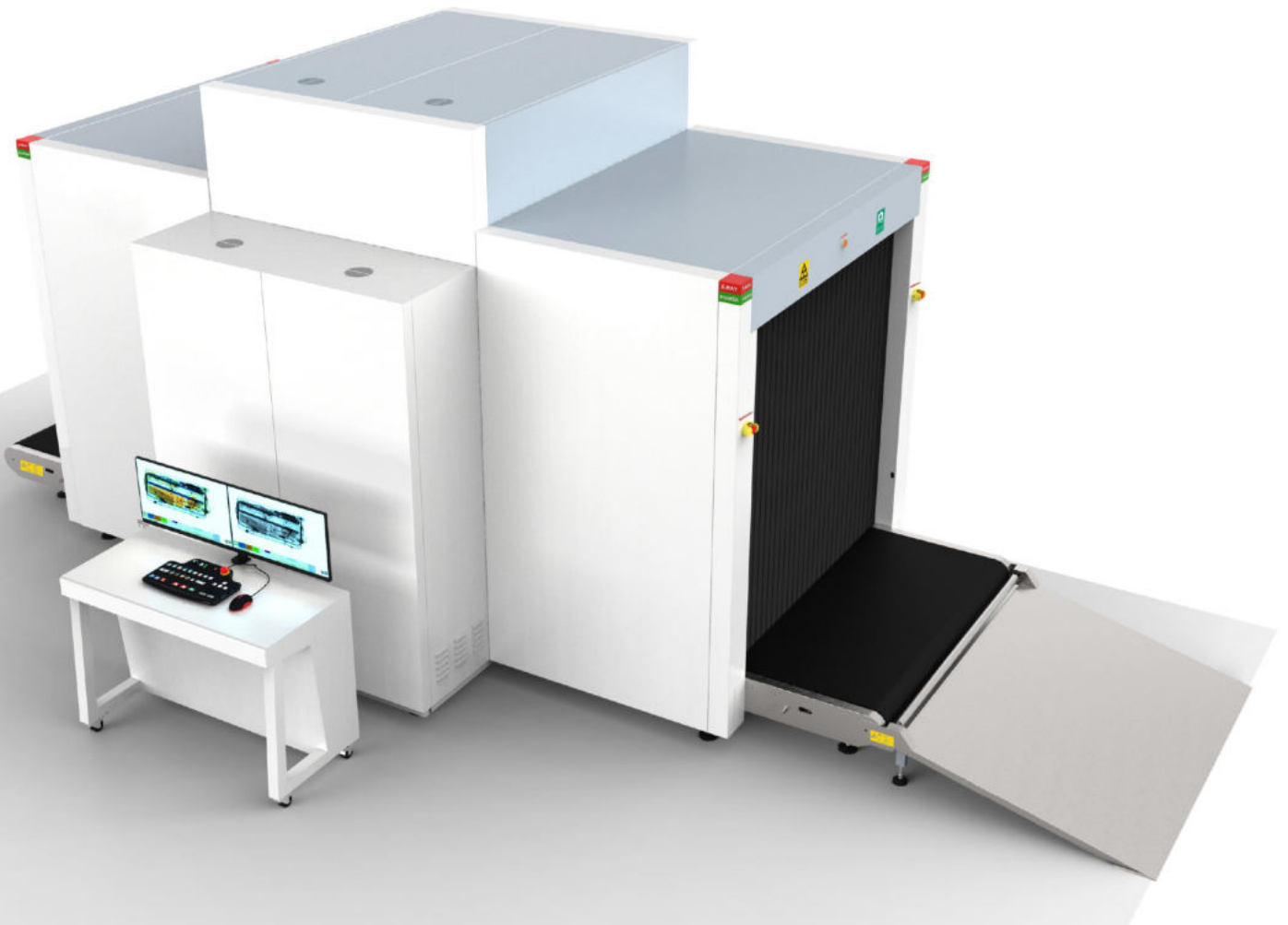


SG-L 150150 D

X-Ray Baggage Scanner

Product highlights

- *Two generator, two view perspective dual energy imaging
- * Multilingual operation
- * Automatic built in test and self diagnosis
- * Secure access Key
- * Uninterruptable power supply(UPS)
- * Threat alert and material classification
- * Auto arching
- * Network-Ready
- * Energy saving design
- * One key turn off
- * Drugs and explosives inspection
- * Indication of the date and time



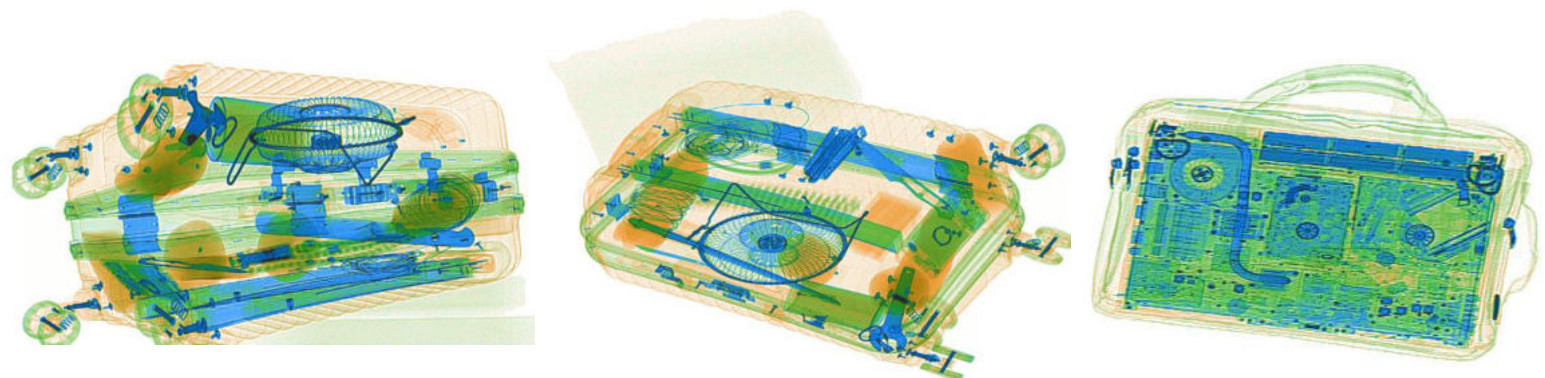
General Specifications

■ Wire Resolution	Typical AWG36(top view); Typical AWG38side view)
■ Penetration resolution	Typical AWG32(top view); Typical AWG32(side view)
■ Spatial resolution	Vertical:1.3, horizontal:1.3 (top view); Vertical:1.3, horizontal:1.3 (side view)
■ Penetration	40mm(top view); 45mm(side view)
■ Resolution of organic matter	1 - 120 mm(top view); 1 - 120 mm(side view)
■ Grayscale and mixture resolution	1 - 60mm(top view); 1-60 mm(side view)
■ Resolution of inorganic objects	0.2-14mm(top view); 0.2-14 mm(side view)
■ Effective material resolution	Meet the requirements of GB15208.1-2005
■ X-Ray dosage each inspection	$\leq 4.8\mu\text{Sv}(\text{uGy})$
■ Boundary Leakage	$\leq 0.5 \mu\text{Sv} /\text{h}(\text{uGy}/\text{h})$
■ S/N ratio	<60dB
■ Conveyor speed	0.25-0.3 m/s
■ Conveyor max load	2000kg
■ Power consumption	2.5KW
■ Safety performance requirements	Meet the requirements of GB15208.1-2005
■ E M C requirements	Meet the requirements of GB15208.1-2005
■ Electrical safety	Meet the requirements of GB15208.1-2005
■ Environmental applicability	Meet the requirements of GB15208.1-2005
■ Leakage current	$\leq 5.0\text{mA}$
■ Film Safety	Guarantee ASA/ISO1600 Film
■ Weight	4000KG
■ Operation temperature/Humidity	5°C-40°C/0%-90%
■ Storage temperature/Humidity	-20°C-60°C /10%-90%
■ Atmospheric pressure	86kPa-106kPa
■ Operation Power	AC220V($\pm 10\%$ -15%) 50 ± 3 Hz
■ Operation system	Win XP. Win 10, win7 optional

Configuration

■ X ray generator	200KV, oil cooling
■ Electric roller	SEW, Three-phase
■ Computer	CPU: Intel ® i3® 3.3GHz, Hard drive: 1TB.Storage : 2G
■ Monnitor	34" LED screen, resolution: 3440*1440 pixels
■ Operation console	Double screen console

Scanned images



Functional characteristics

■ Power-on self-test	With the function of fault self-check, automatically judge the fault and prompt the fault code information in time.
■ Image processing	With the function of Color/BW, negative, high/low penetration, organic /inorganic stripping, general enhancement, and pseudo color, etc.
■ Image Recall	30 preceding images recallable.
■ The number of images stored	Up to 10,000 images stored automatically.
■ Image management	With the functions of image information query, open, export and print, 6 image formats can be exported (JPG, BMP, XF, PNG, TIFF, GIF)
■ Operator management	Operators can be added and deleted, and operator names, groups, passwords, enabled status can be modified, and usage logs can be exported.
■ Dangerous goods image insertion	TIP insertion pictures can be added and deleted, TIP enable status, injection interval, floating range, motion determination time, and stationary determination time can be set; the user can check the operator by recording information.
■ Equipment diagnosis	Key components of equipment can be diagnosed through the diagnostic interface, including detector, motor positive and negative rotation, infrared sensor, special keyboard, etc.
■ System Settings	Programmable key, imaging display (horizontal, vertical image, maximum magnification, display recovery), scanning mode setting (two-way, direction, strong scanning, energy saving), auxiliary inspection (difficult to penetrate, explosives, drugs), luggage counter function Settings.
■ System equipment information	Display software version, equipment model, factory number, scan count, power on time, beam out time, image file storage capacity and other information. Able to conduct automatic through-baggage training for new operators.
■ Training function	Able to conduct automatic through-baggage training for new operators.

Compliance

■ International	<ul style="list-style-type: none"> * ISO19001 ; ISO14001 ; ISO27001 ; OHSMS18001 ; * CE , ROHS, FCC, REACH * USA, FDA
■ National	<ul style="list-style-type: none"> * Health Inspection Report * Computer Software Copyright Registration Certificate * Software Product Registration Certificate * Radiation Safety Certificate from Ministry of Public Security * Quality Certification from Safety and Police Electronic Products Quality Inspection Center * Design patent certification