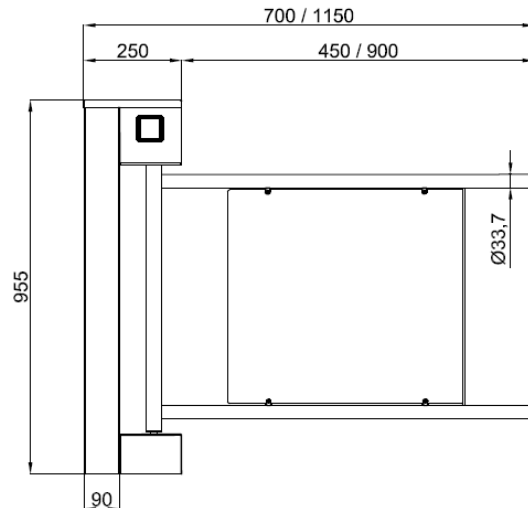
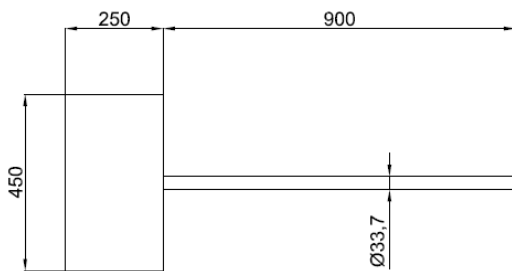
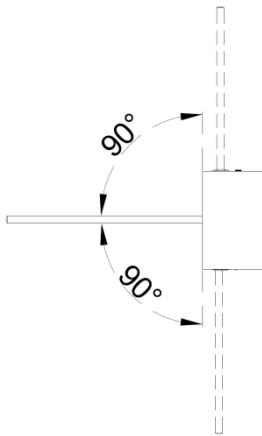


PL 125 TECHNICAL SPECIFICATIONS



■ Power Requirements	:	110/220V. 60/50Hz. AC (%±10) 24V. DC at standby ~11W. max. ~65W.
■ Dimensions	:	450 x 250 (+ wing length 450-900) x 955 mm
■ Wing Features	:	$\varnothing 33,7 \times 1,5$ mm 304-Grade (Opt. 316-Grade) Stainless steel wing frame infilled with acrylic panel. (Opt. anodised hard aluminium wing frame)
■ Wing Length	:	450 or 900mm
■ Indicator Features	:	Green Arrow & Red Cross LED direction indicators as standard.
■ Body Features	:	304-Grade (Opt. 316-Grade) Stainless steel with orbital brushed matt (opt. satin brushed) protected against water for outdoors use.
■ Operating Temperature, Humidity, IP Rating	:	-20°C - +68°C (Opt. -50°C with heater unit) / RH 95% non-condensing / IP 54 Outdoor Model (Opt. IP 56)
■ Minimum Passage Performance	:	15 million passages.

- Control System : All inputs are opto-coupler protected .Controlled by dry contact or grounding input. Compatible with all access control systems that provide dry contact or grounding outputs. Optional RS232/RS485/TCP IP control module is available.
- Operation : Motorized system that operates bi-directionally.
- Output Data : The system provides dry contact passage feedback by relays.
- Emergency Mode : (Standard: Fail Safe); in case of emergency input the wing opens in either direction (selectable by dip switch).
- Wing Speed : Wing speed is electronically controlled by adjustable PWM motor drive system.
 - Wing Opening Speed= ~2.2 seconds by default, ~1.8 - 3.5 sec. adjustable.
 - Wing Closing Speed= ~2.2 seconds by default, ~1.8 -3.5 sec. adjustable.
 - ❖ The above figures for 900mm stainless steel wing frame with plexiglas panel.
 - ❖ 90° movement from original position.
- Standard Features : Direction indicators, cut-out and acrylic cover for card reader mounting (when requested at the time of purchase order).
- Optional Accessory and Applications : Remote control units, interface unit for PC, RS485, RS232 and LAN, counter, audio-messaging system, alarm sensor, heater positive unit, coin slot/intelligent coin system and coin box, card reader pole, pipe barrier (Separator), base plate, customised top covers to accommodate various accessories.

**Design and specifications are subject to change without notice.*

